



# EXPERIENCE SHOWERS

Our system creates an enveloping dream world experience for users with the push of a button trigger. Allow us to transport you to a world beyond imagination that interacts with all of your senses and immerses you in different environments.

# Table of Contents

Experience Shower Description	03
Model Selection	04
Program Selection	05
Controller Specification	08
Installation Diagram	09
Product Photos	10
About Us	11
Contact Information	12

# EXPERIENCE SHOWERS

OUR SYSTEM CREATES AN ENVELOPING DREAM WORLD EXPERIENCE FOR USERS WITH THE PUSH OF A BUTTON TRIGGER. ALLOW US TO TRANSPORT YOU TO A WORLD BEYOND IMAGINATION THAT INTERACTS WITH ALL OF YOUR SENSES AND IMMERSSES YOU IN DIFFERENT ENVIRONMENTS.

Our product, Experience Showers, allows users to immerse themselves in an experience that mirrors a wellness shower. A combination of light and sound effects with our aromatised rain showers allows you to dive into a dream world and have a special multisensory experience.

With a simple push of a button, warm tropical rain starts to fall from above. A tropical aroma slowly fills the air, creating a distinct mood. Sounds of birds chirping and hues of warm light help create a palpable and vivid atmosphere like you can feel the rays of the sun on your skin. This is just one of many possible shower scenarios users can create with our product.

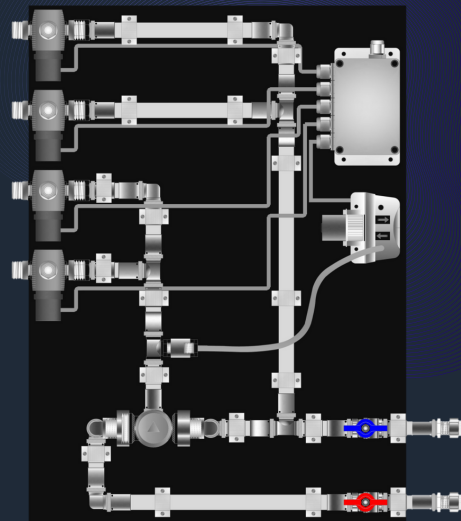
The possibilities are endless with this innovative technology. Each custom experience builds a sanctuary that appeals to particular emotions and helps you rejuvenate and reinvigorate.

Experience Showers is designed to be easily configured, with the components organized in simple kits. With components such as the controller, thermo-mixer, solenoid valves, nonreturn valve, aroma pump and aroma reservoir pre-installed on a mounting board, installation is quick and easy, allowing you to dive into your dream world almost immediately.

**HALE**  
CONCEPT

[WWW.HALECONCEPT.COM](http://WWW.HALECONCEPT.COM) | PAGE 03

## MODEL SELECTION |



MODEL:SAGE EXPERIENCE SHOWER CSV1

MODEL:SAGE SHOWER BOARD V1

## CABLE SELECTION |



MODEL:M12 CABLE

PUSH BUTTON BOARD CONNECTOR

LENGTH : 3 METER ,6 METERS , 10 METER ,CUSTOM



MODEL:RJ45 CABLE

RELAY BOARD CONNECTOR

LENGTH : 3 METER ,6 METERS , 10 METER ,CUSTOM



MODEL:RCA CABLE

SPEAKER CONNECTOR

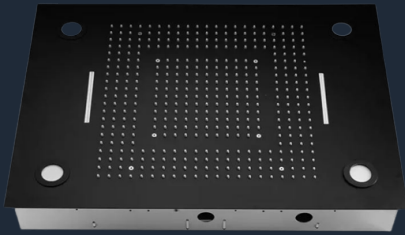
LENGTH : 3 METER ,6 METERS , 10 METER ,CUSTOM

**HALE**  
CONCEPT

WWW.HALECONCEPT.COM | PAGE 04



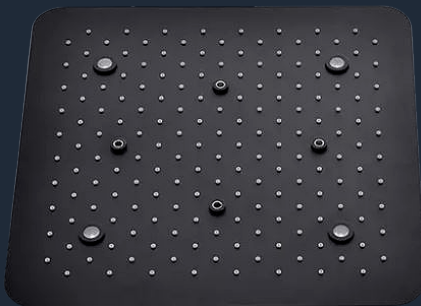
## SHOWER HEAD SELECTION |



MODEL: HM-837002

SURFACE FINISHING: CHROME

FEATURES : WATERFALL, RAIN, SPRAY, RAIN,CURTAIN



MODEL: HM-B850010

SURFACE FINISHING: CHROME

FEATURES : RAINFALL , SPRAY

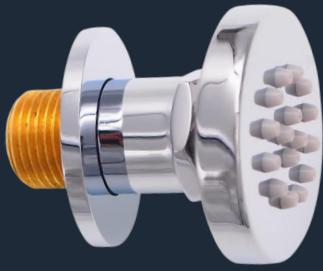


NOTE: OUR SYSTEM WILL FIT INTO ANY 3RD PARTY PRODUCTS

**HALE**  
CONCEPT

[WWW.HALECONCEPT.COM](http://WWW.HALECONCEPT.COM) | [PAGE 05](#)

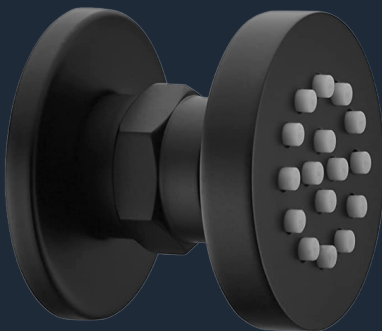
## SIDE SPRAYER JET SELECTION |



MODEL: 8541794986  
SURFACE FINISHING: SILVER  
PRODUCT DIMENSIONS : 21.84 X 16.26 X 7.87 CM;  
771.11 GRAMS



MODEL: B094FD1YWS  
SURFACE FINISHING: BRUSHED GOLD  
BRASS  
PRODUCT DIMENSIONS : DIAMETER 5CM/ 2" ,NET WEIGHT:  
0.25KG/ 0.55LB, 0.25KG/ 0.55LB



MODEL: B094FP7TXY  
SURFACE FINISHING: MATTE BLACK  
PRODUCT DIMENSIONS : 10.4 X 6.1 X 6 CM; 205 GRAMS

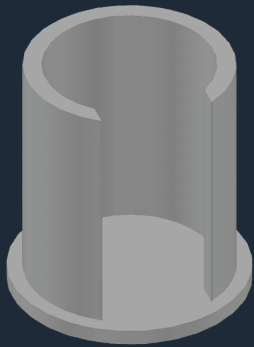


NOTE: OUR SYSTEM WILL FIT INTO ANY 3RD PARTY PRODUCTS

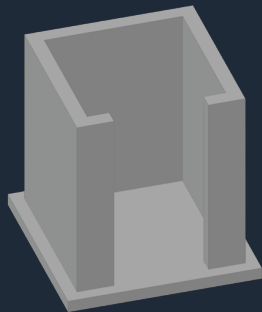
**HALE**  
CONCEPT

WWW.HALECONCEPT.COM | PAGE 06

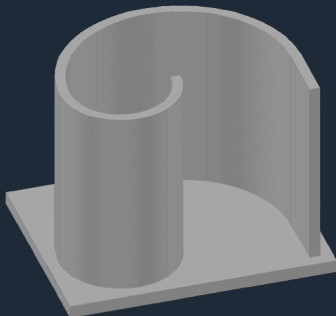
## SHOWER CABIN SELECTION |



MODEL: NARETA-SC-01  
SURFACE FINISHING: ANY  
DIMENSION :  $\varnothing$  1100 MM



MODEL: NARETA-SC-02  
SURFACE FINISHING: ANY  
DIMENSION: 1100 X 1100 MM



MODEL: NARETA-SC-03  
SURFACE FINISHING: ANY  
DIMENSION:  $\varnothing$  1100 MM



NOTE: OUR SYSTEM WILL FIT INTO ANY 3RD PARTY PRODUCTS  
WE DO CUSTOM MANUFACTURING AS PER CLIENT  
REQUIREMENTS .

**HALE**  
CONCEPT

[WWW.HALECONCEPT.COM](http://WWW.HALECONCEPT.COM) | [PAGE 07](#)

# Program Selection

## BLUE LAGOON

- RAIN NOZZLE-WARM
- FOG NOZZLE-WARM
- WATERFALL-COLD
- SIDE NOZZLE-COLD
- AROMA
- RGB LED
- SOUND EFFECT

## MARIANA TRENCH

- RAIN NOZZLE-WARM
- FOG NOZZLE-COLD
- WATERFALL
- BUCKET SHOWER
- AROMA-1
- AROMA-2
- RGB LED
- SOUND EFFECT

## NILE NIGHT

- RAIN NOZZLE-WARM
- FOG NOZZLE-COLD
- SIDE NOZZLE-COLD
- AROMA
- RGB LED
- SOUND EFFECT

## PARADISE STORM

- RAIN NOZZLE-WARM
- FOG NOZZLE-COLD
- SIDE NOZZLE-WARM
- AROMA
- RGB LED
- SOUND EFFECT

## SIBIRIAN NIGHT

- RAIN NOZZLE-WARM
- FOG NOZZLE-COLD
- SIDE NOZZLE-WARM
- AROMA
- RGB LED
- SOUND EFFECT

### BLUE LAGOON

Blue Lagoon Iceland is a place where the powers of geothermal seawater create transformational spa journeys.

### MARIANA TRENCH

The Mariana Trench is an underwater trench where the depth and pressure create a uniquely immersive experience.

### NILE NIGHT

The Nile is a river where the freshwater from two main tributaries creates a distinct experience that activates all the senses.

### PARADISE STORM

The sounds of thunder, unique aromas and swirling showers of water help create a mesmerizing spa experience that mirrors a tropical storm.

### SIBIRIAN NIGHT

Siberia is a place where the nighttime winds, sounds and precipitation help create a special sensory experience.

**HALE**  
CONCEPT

# CONTROLLER SPECIFICATION |

MODEL:SAGE EXPERIENCE SHOWER CSV1

INPUT:24V DC -5A

OUTPUT:

5 RELAY,1 RGB LED ,1 SPEAKER

INPUT:

PUSH BUTTON -4 NOS

PROGRAM: PRELOADED

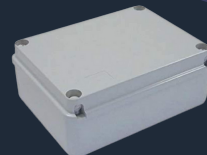
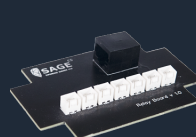
MAKE:SAGE CS

**MOUNTING  
PAD**



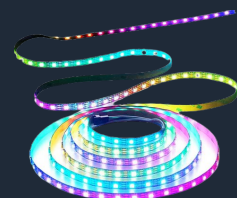
**RJ45-**

**SAGE RELAY PCB  
AND IP RATED  
BOX**



**RGB PORT**

- WS2812B-LED
- VOLTAGE:5V DC



**POWER  
PORT**

MODEL:LK0609

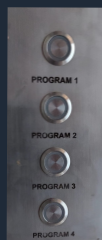
INPUT:100-240 1.5AMP 50/60 HZ

OUTPUT-24V-5A



**PUSH  
BUTTONS**

- 22MM MOMENTRY PUSH BUTTOM-4 NOS
- SAGE PUSH BUTTON PCB WITH M12 CONNECTOR-1 NOS
- PUSH BUTTON PLATE-1NOS



**AUDIO  
OUTPUT**

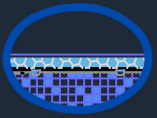
- VISATON
- 4-6 Ω SPEAKER



**HALE  
CONCEPT**

WWW.HALECONCEPT.COM | PAGE 09

# INSTALLATION DIAGRAM |



BLOW UP DETAIL @ A

SURFACE FINISHING: ANY

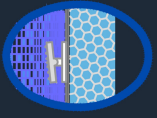
FEATURES : RAINFALL, RAIN CURTAIN, WATERFALL, SPRAY



BLOW UP DETAIL @ B

SURFACE FINISHING: WHITE

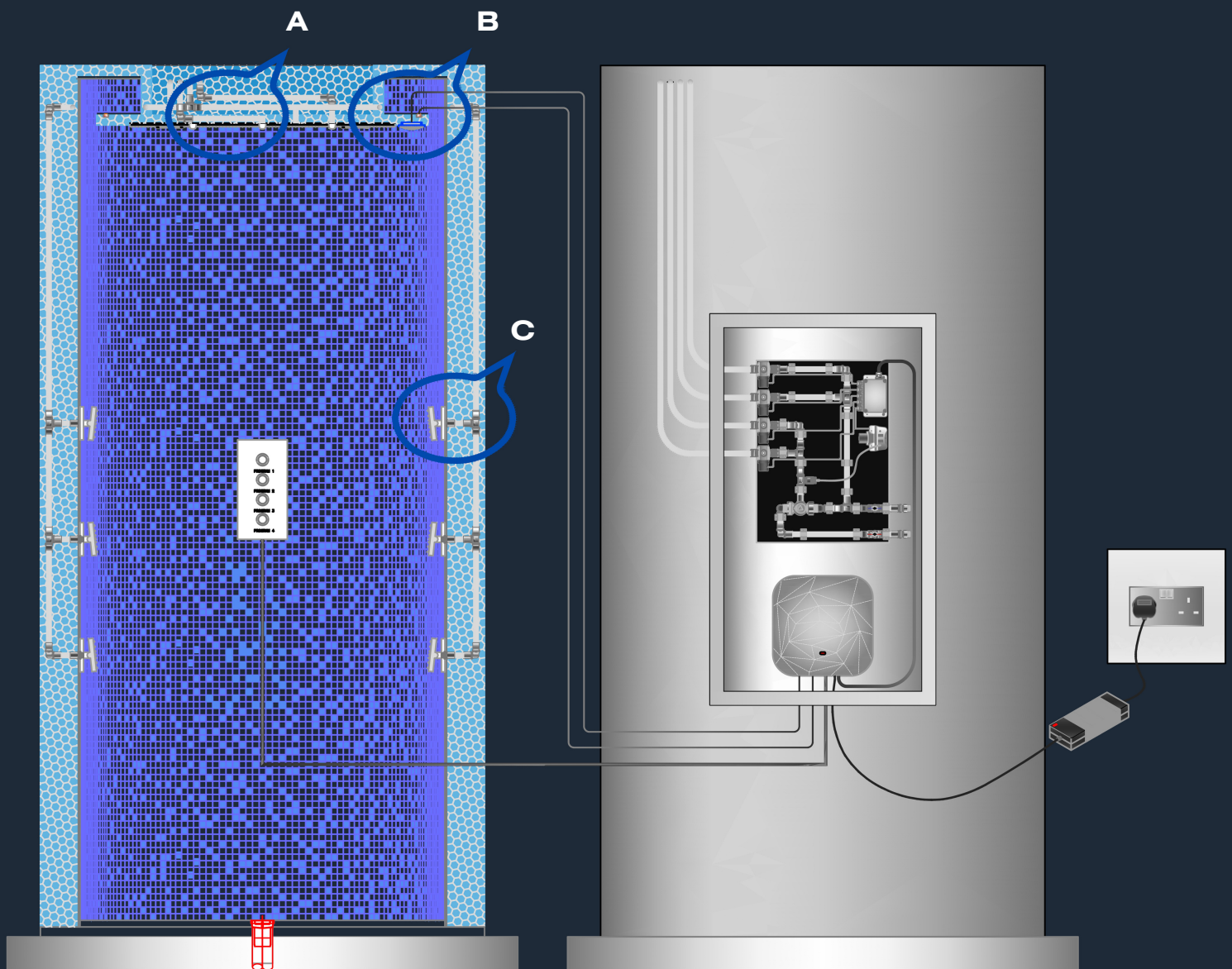
FEATURES : 4-6  $\Omega$  SPEAKER



BLOW UP DETAIL @ C

SURFACE FINISHING: CHROME ,SLIVER,BLACK

FEATURES : SIDE SPRAYER JET



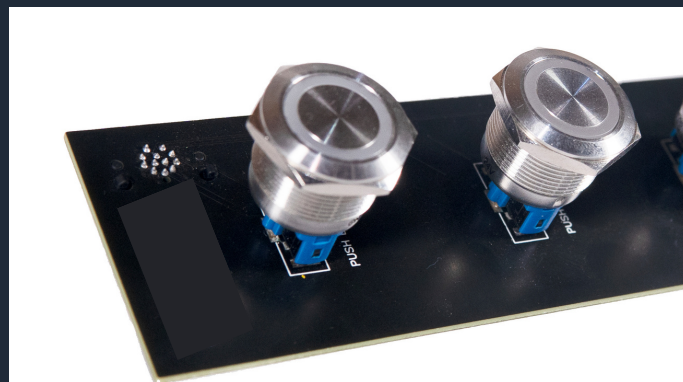
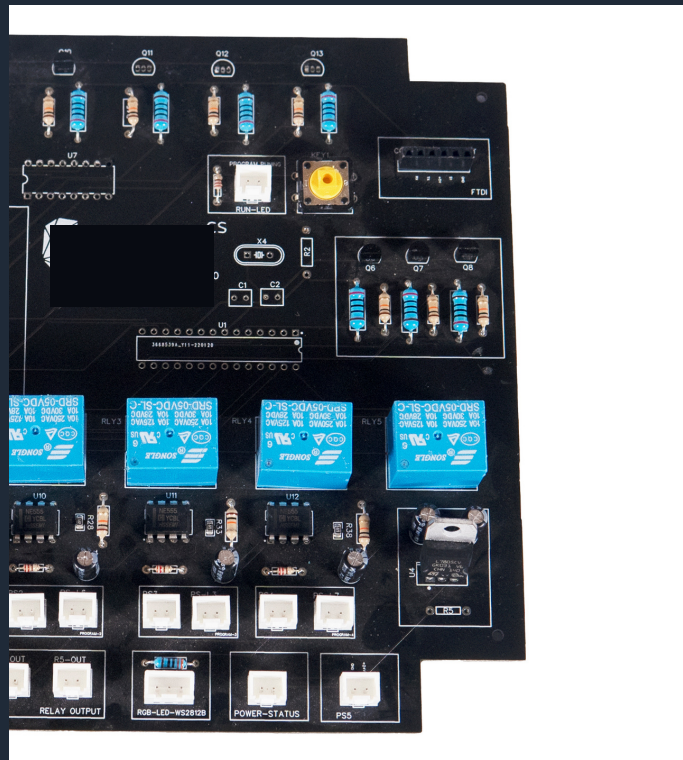
**HALE**  
CONCEPT

WWW.HALECONCEPT.COM | PAGE 10



## PRODUCT PHOTO'S |

Experience shower sage controller board, push button, enclosures, relay board, mounting plate.



**HALE**  
CONCEPT

[WWW.NARETA.COM](http://WWW.NARETA.COM) | PAGE 11



# HALE CONCEPT

**An innovative company that specializes in the development of technology-driven solutions for the agriculture, construction, and other industries. We develop customized solutions to meet the needs of our customers and create products that are tailored to their specific needs.**

Our offerings include Internet of Things (IoT) solutions, modular building solutions, and agricultural solutions.

Our team is composed of highly experienced professionals with expertise in software engineering, automation, and robotics. We have a wide range of experience in creating products for various industries and sectors, including agriculture, construction, and manufacturing. Our team is committed to providing innovative solutions that are tailored to our customers' needs. We strive to provide our customers with the best products and services, and we are dedicated to providing exceptional customer service. We understand the importance of keeping our customers informed, and we strive to provide timely and accurate information. Our team is always willing to answer any questions or concerns you may have. At Hale Concept, we are passionate about creating innovative solutions that enable our customers to achieve their goals. We are always looking for new ways to improve our services and products and make them more efficient. We work with our customers to ensure their satisfaction and strive to exceed their expectations. We are committed to providing our customers with the best products and services in the market.

# CONTACT INFORMATION

---



+91 9961558434



INFO@HALECONCEPT.COM



WWW.LINKEDIN.COM/COMPANY  
/HALE-CONCEPT

---

## WEBSITE:

WWW.HALECONCEPT.COM